

REDUCTION SLEEVES &
CNC MACHINING CENTER
ACCESSORIES



*HOLDING THE POWER TO **CHANGE***



Dear Customer

It is indeed our pleasure to present our comprehensive new catalogue to you.

We have endeavoured and developed a user friendly catalogue, which you may find very helpful. Quality is the essence of our business, & is all pervasive in our manufacturing operations. You may observe same quality pursuit, in this latest catalogue of ours also.

Our new introductions BMT Tool Holders, VDI Tool holders DIN 69880 through coolant reduction sleeves & slit sleeves fill an important need, for more, high speed machining applications, especially in the field of aerospace industry.

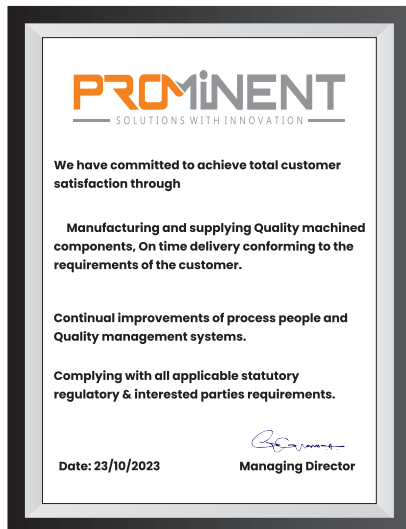
Our customer friendly, expert application engineers, with their available for you, if required, for developing appropriate cost effective tool holding solution, we are always at your services, for any special requirements of yours too. Which is our specialty and well recognized by discerning customers.

Your valued suggestions are always welcome.

STARTED
2021

20
EXPERIENCE

COMMITTED
TO MEET
AND EXCEED
CUSTOMER
EXPECTATIONS
— IN —
QUALITY
DELIVERY
C O S T



We are proud to announce that we are an ISO 9001:2015 Company re certified by TUV INDIA

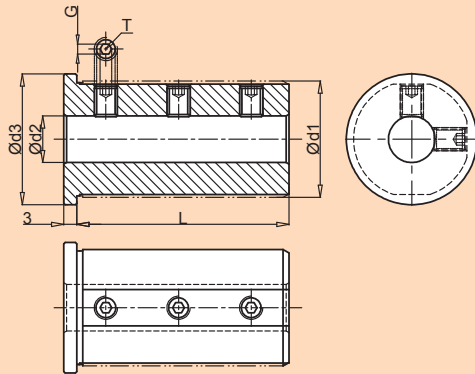


Our Commitment to Greater & Consistent Quality is the Driving Force Behind Our Quest for Customer Satisfaction

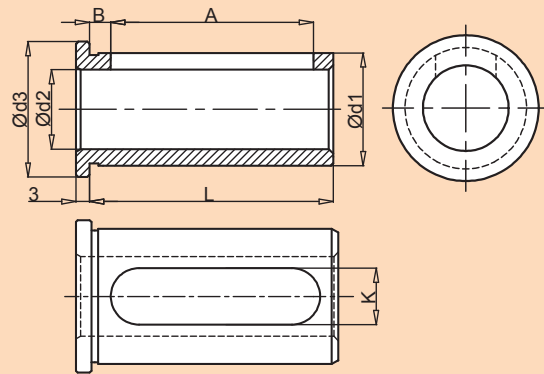




UNIVERSAL REDUCTION SLEEVES



SUITABLE FOR BORING TOOL HOLDERS WITH SMALLER SHANK TOOLS



SUITABLE FOR BORING TOOL HOLDERS WITH LARGE SHANK TOOLS TYPE-K (KEYWAY TYPE)

ARTICLE CODE	Ød1	Ød2	Ød3	L	GRUB SCREW T		
RSU200839	20	08	25	39	M6X5		
RSU201039		10			M6X5		
RSU250850		08			M6X8		
RSU251050	25	10	30	50	M8X6		
RSU251250		12			M8X6		
RSU320859		08			37	59	M6X10
RSU321059	10	M8X10					
RSU321259	12	M8X8					
RSU321659	32	16	45	69	M8X6		
RSU400869		08			55	80	M6X16
RSU401069		10					M8X12
RSU401269	12	M8X12					
RSU401669	40	16	61	72	M8X10		
RSU402069		20			M8X8		
RSU402569		25			M8X6		
RSU500880	50	08	55	80	M6X16		
RSU501080		10			M8X16		
RSU501280		12			M8X16		
RSU501680		16			M10X16		
RSU502080		20			M10X12		
RSU502580		25			M10X12		
RSU503280		32			M10X8		

ARTICLE CODE	Ød1	Ød2	Ød3	K	L	A	B
RSUK201239	20	12	25	9	39	32.5	3.5
RSUK201639		16					
RSUK201252	20	12	25	13	52	45.5	3.5
RSUK201652		16					
RSUK251650	25	16	30	13	50	43.5	3.5
RSUK252050		20					
RSUK322059	32	20	37	13	59	51	5
RSUK322559		25					
RSUK403269	40	32	45	17	69	61	5
RSUK504080	50	40	55	17	80	72	5

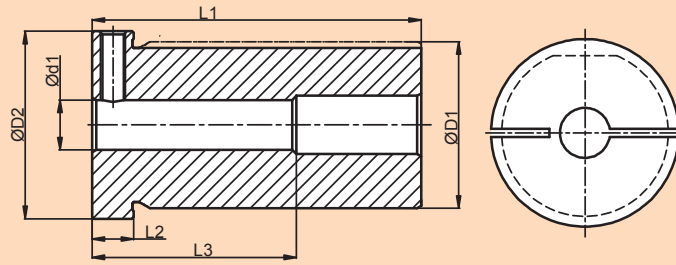
• Made out of C45 material & toughened to 20±2 HRC

NOMENCLATURE FOR ORDER CODE | REDUCTION SLEEVE - RS | UNIVERSAL TYPE - U | NILL-SMALLER TOOL SHANK & K-LARGER TOOL SHANK - K | TOTAL LENGTH - XX | TOOL SHANK DIAMETER - XX | TOOL HOLDER BORE - XX

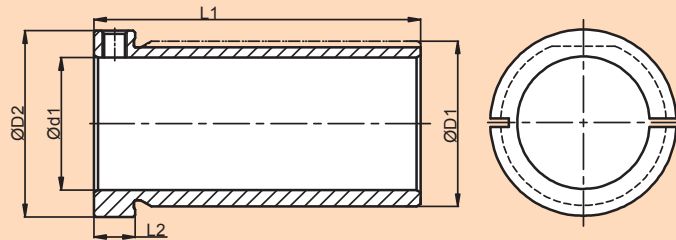
• Customized design can be supplied upon request. • All dimensions are in mm.



UNIVERSAL SLIT REDUCTION SLEEVES



SUITABLE FOR BORING TOOL HOLDERS WITH SMALLER SHANK TOOLS



SUITABLE FOR BORING TOOL HOLDERS WITH LARGE SHANK TOOLS TYPE-K (KEYWAY TYPE)

MATERIAL ID	ØD1	ØD2	Ød1	L1	L2	L3	L3/Ød1 RATIO
RSSE1E2250860	25	30	08	60	10	50	6
RSSE1E2251060			10			50	5
RSSE1E2251260			12			50	4
RSSE1E2251460			14			50	3.5
RSSE1E2320869	32	37	08	69	10	50	6
RSSE1E2321069			10			50	5
RSSE1E2321269			12			50	4
RSSE1E2321469			14			50	3.5
RSSE1E2400879	40	45	08	79	10	50	6
RSSE1E2401079			10			50	5
RSSE1E2401279			12			50	4
RSSE1E2401479			14			50	3.5
RSSE1E2500890	50	55	08	90	10	50	6
RSSE1E2501090			10			50	5
RSSE1E2501290			12			50	4
RSSE1E2501490			14			50	3.5

MATERIAL ID	ØD1	ØD2	Ød1	L1	L2	L1/Ød1 RATIO
RSSE1E2251660	25	30	16	60	10	3.8
RSSE1E2251860			18			3.3
RSSE1E2252060			20			3.0
RSSE1E2321669			16			4.3
RSSE1E2321869	32	37	18	69	10	3.8
RSSE1E2322069			20			3.5
RSSE1E2322569			25			2.8
RSSE1E2401679	40	45	16	79	10	5.0
RSSE1E2401879			18			4.4
RSSE1E2402079			20			4.0
RSSE1E2402579			25			3.2
RSSE1E2403279	50	55	32	90	10	2.5
RSSE1E2501690			16			5.6
RSSE1E2501890			18			5.0
RSSE1E2502090			20			4.5
RSSE1E2502590	50	55	25	90	10	3.6
RSSE1E2503290			32			2.8
RSSE1E2504090			40			2.3

• Made out of En47 material & hardening to 54±2 HRC

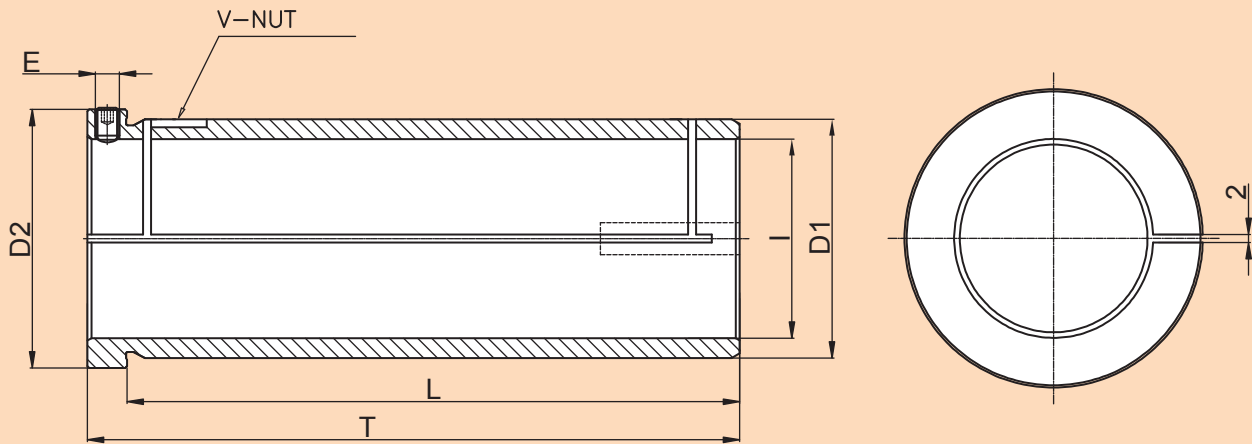
NOMENCLATURE FOR ORDER CODE | REDUCTION SLEEVE - **RS** | SPLIT TYPE - **S** | SUITABLE FOR E1 & E2 VARIETY - **E1E2**
TOTAL LENGTH - **XX** | TOOL SHANK DIAMETER - **XX** | VDI TOOL HOLDER BORE - **XX**

• Customized design can be supplied upon request. • All dimensions are in mm.





PU REDUCTION SLEEVES



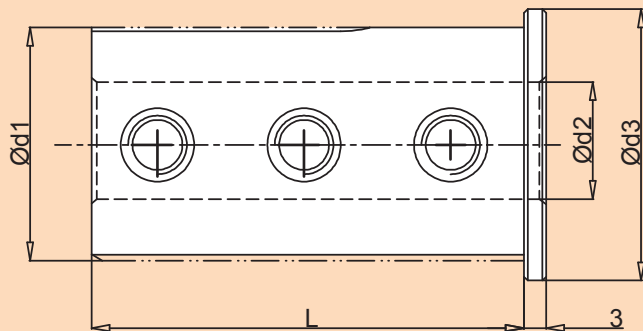
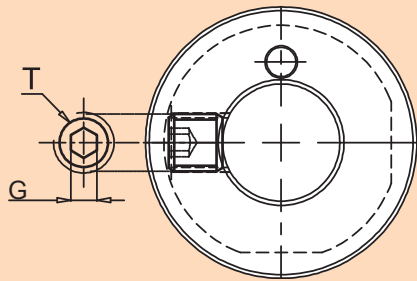
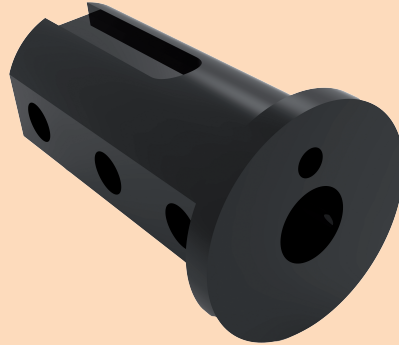
CODE	D1	I	L	T	D2	E	TYPE	SUITS FOR TOOL HOLDER
PU1S-3225115	32	25	115	125	37	M6	PU1S	PU1S-32-60
PU1S-4032127	40	32	127	137	45	M6	PU1S	
PU1S-5040127	50	40	127	137	55	M6	PU1S	
PU1S-6050154	60	50	154	164	65	M6	PU1S	

• Made out of En-47 material & hardening to 54±2 HRC

• Customized design can be supplied upon request. • All dimensions are in mm.



THROUGH COOLANT SLEEVES



ARTICLE CODE	Ød1	Ød2	Ød3	L	GRUB SCREW T	QTY	G
RSU200839TC	20	08	25	39	M6X5	3	3
RSU250850TC	25	08	30	50	M6X8	3	3
RSU251050TC		10			M8X6	3	4
RSU320859TC	32	08	37	59	M6X10	3	3
RSU321059TC		10			M8X10	3	4
RSU321259TC		12			M8X8	3	4
RSU400869TC	40	08	45	69	M6X12	3	3
RSU401069TC		10			M8X12	3	4
RSU401269TC		12			M8X12	3	4
RSU401669TC		16			M8X10	3	4
RSU500880TC	50	08	55	80	M6X16	3	3
RSU501080TC		10			M8X16	3	4
RSU501280TC		12			M8X16	3	4
RSU501680TC		16			M10X16	3	5
RSU502080TC		20			M10X12	3	5
RSU502580TC		25			M10X12	3	5

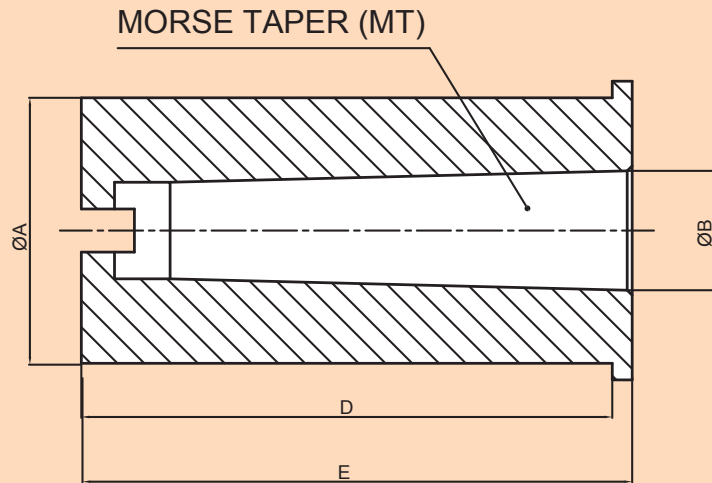
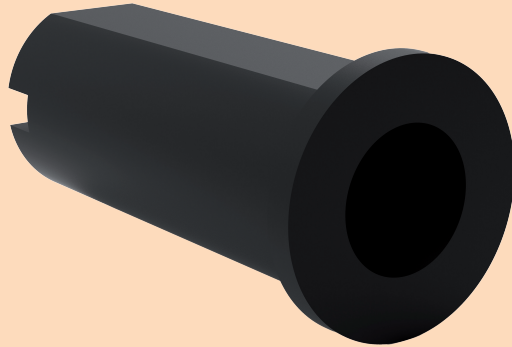
• Made out of C45 material & toughen to 20+2 HRC

• Customized design can be supplied upon request. • All dimensions are in mm.





MORSE TAPER REDUCTION SLEEVES



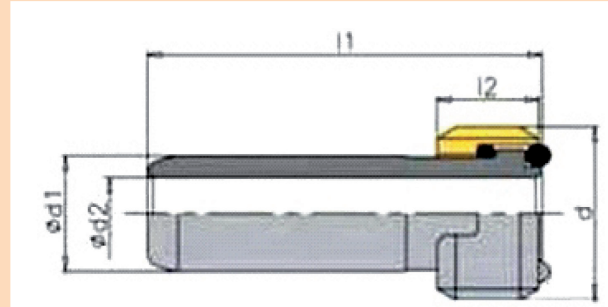
ITEM NAME	A	B	C	D	TYPE	SUIT FOR TOOL HOLDER	SUIT FOR TOOL DISC	
RS2025MT1	25	MT1	58	61	3	BH2025CH18, BH2025CH25	STD50820, STD63820 STD80820, STD80820 HD63820, HD80820 STD801220, HD801220	
RS2032MT1	32	MT1	77	80	3	BH2032CH18, BH2032CH25 BH2032CH30, BH2032CH35		
RS2032MT2	32	MT2	78	81	3			
RS2532MT1	32	MT1	77	80	3	BH2532CH30, BH2532CH40	STD80825, STD100825 HD80825, HD100825 HD125825, STD1001225 STD1251225, HD1001225 HD1251225	
RS2532MT2	32	MT2	78	81	3			
RS2540MT1	40	MT1	78	81	3	BH2540CH30, BH2540CH40		
RS2540MT2	40	MT2	78	81	3			
RS2540MT3	40	MT3	79	92	3			
RS32/4040MT1	40	MT1	80	83	3	BH3240CH40, BH3240CH50 BH4040CH35	STD100832, STD125832 STD160832, HD125832 STD1251232, STD1601232 HD1251232, STD125840	
RS32/4040MT2	40	MT2	80	83	3			
RS32/4040MT3	40	MT3	79	92	3			
RS32/4050MT2	50	MT2	89	92	3	BH3250CH40, BH3250CH50 BH4050CH35		
RS32/4050MT3	50	MT3	89	92	3			
RS32/4050MT4	50	MT4	92	115	3			

• Made out of EN-19 material & toughen to 40+2 HRC

• Customized design can be supplied upon request. • All dimensions are in mm.



COOLANT TUBES FOR HSK TOOL HOLDERS TUBES FOR HSK TOOL HOLDERS



DIMENSIONS IN mm

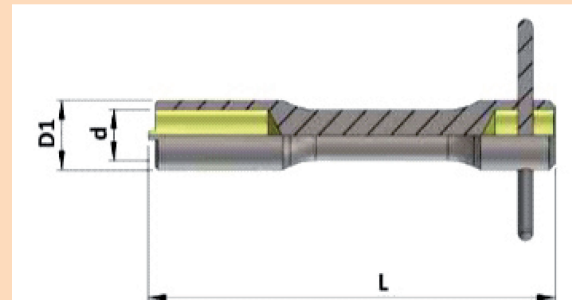
DESIGNATION	HSK-A	Ø d1f8	Ø d2	d	l1	l2
CT/HSK A 32	32	6	3.5	M10x1	26.0	5.5
CT/HSK A 40	40	8	5.0	M12x1	29.1	7.5
CT/HSK A 50	50	10	6.4	M16x1	32.7	9.5
CT/HSK A 63	63	12	8.0	M18x1	36.0	11.5
CT/HSK A 80	80	14	10.0	M20x1	39.6	13.5
CT/HSK A 100	100	16	12.0	M24x1	43.6	15.5

NOTE: THE COOLANT TUBES ARE SEALED WITH O-RING AND ARE BUILT WITH AN ANGULAR FREEDOM OF $\pm 1^\circ$ ABOUT THE NEUTRAL AXIS ALONG WHICH IT NORMALLY STAYS.

ORDERING INSTRUCTION

CT / HSK A63
COOLANT TUBE SUITABLE FOR SHANK

SPANNERS FOR COOLANT TUBES



DIMENSIONS IN mm

DESIGNATION	d	D1	L1
KCT/HSK A 50	10.2	14.5	115
KCT/HSK A 63	12.2	16.5	136
KCT/HSK A 100	16.2	22.0	136

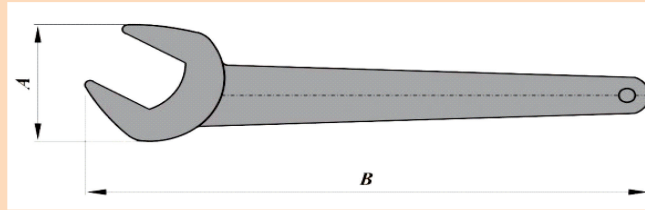
ORDERING INSTRUCTION

KCT / HSK A63
KEY FOR COOLANT TUBE SUITABLE FOR SHANK





SPANNERS



DIMENSIONS IN mm

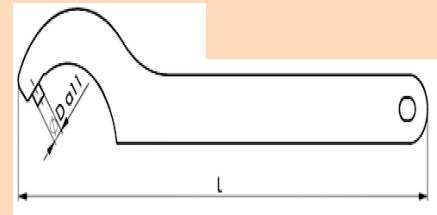
DESIGNATION	A		B		SUITABLE FOR NUTS
	mm		mm	Inch	
GS17	36		155	6.1	UM/ER11
GS25	50		218	8.3	UM/ER16
GS30	63		265	9.8	UM/ER20

ORDERING INSTRUCTION

GS / 17

SINGLE END TYPE ACROSS FLATS SIZE

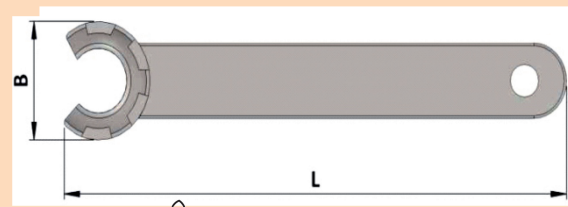
TYPE E FOR SLOTTED NUTS



DIMENSIONS IN mm

DESIGNATION	A	B	SUITABLE FOR NUTS
E25	155	6.1	UM/ER25
E32	190	7.5	UM/ER32
E40	230	9.0	UM/ER035
E50	280	11.0	UM/ER50
E150	280	11.0	UM/ERG150

TYPE EM FOR MINI NUTS

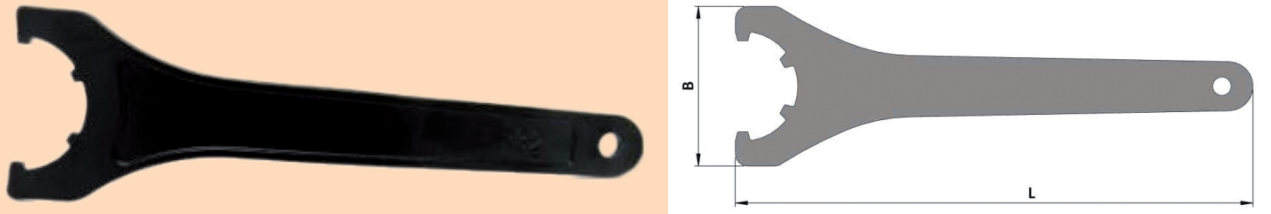


DIMENSIONS IN mm

DESIGNATION	A	B	SUITABLE FOR NUTS
E8M	12.4	70	ER8M
E11M	16.8	90	ER11M
E16M	22.5	110	ER16M
E20M	29	120	ER20M
E25M	36	130	ER25M



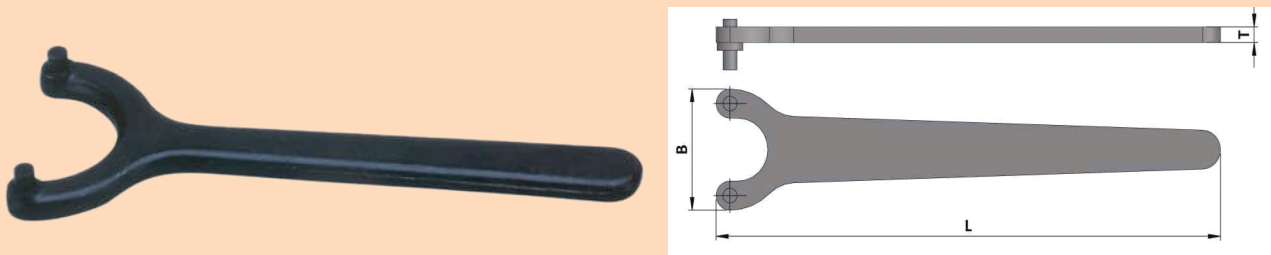
SPANNER TYPE E



 DIMENSIONS IN mm

SPANNER DESIGNATION	A	B	SUITABLE FOR NUTS
E 20	55	180	ER 20
E 25	65	210	ER 25
E 32	75	250	ER 32
E 40	90	290	ER 40
E 50	110	350	ER 50

SPANNER TYPE ER A



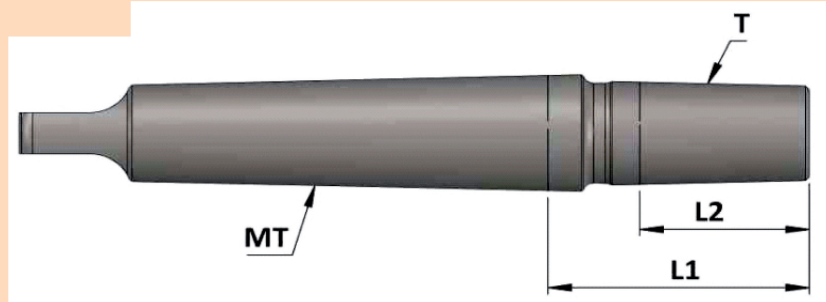
 DIMENSIONS IN mm

SPANNER DESIGNATION	T	B	L	SUITABLE FOR NUTS
E 25 A	4	31	130	ER 20
E 32 A	5	42	150	ER 25





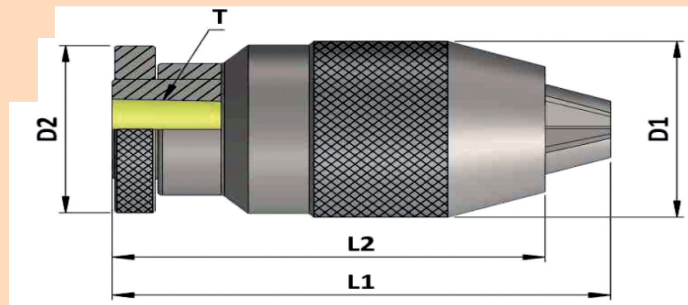
PRECISION ARBOR (DIN 228 B)



DIMENSIONS IN mm

DESIGNATION	T	MORSE TAPER	L1	L2
A MT1	J1	MT1	27.7	16.7
A MT2	J1	MT2	29.5	16.7
A MT2	J2a	MT2	29.0	19
AMT2	J6	MT2	38.5	25.4
A MT3	J6	MT3	39.0	25
A MT4	J6	MT4	40.5	4
A MT5	J6	MT5	40.8	25.4
				25.4

PRECISION KEY LESS DRILL CHUCK

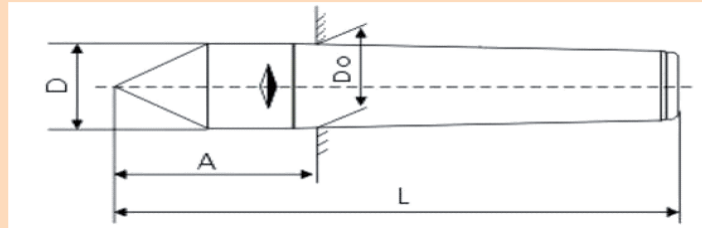


DIMENSIONS IN mm

DESIGNATION	D1	D2	T	L1	L2
DC 6.5 B12	34	34	B12	68	61.5
DC 6.5 J1	34	34	J1	68	61.5
DC 6.5 J2a	34	34	J2a	68	61.5
DC 1-13 B16	50	48	B16	103	90.5
DC 1-13 J6	50	48	J6	103	90.5



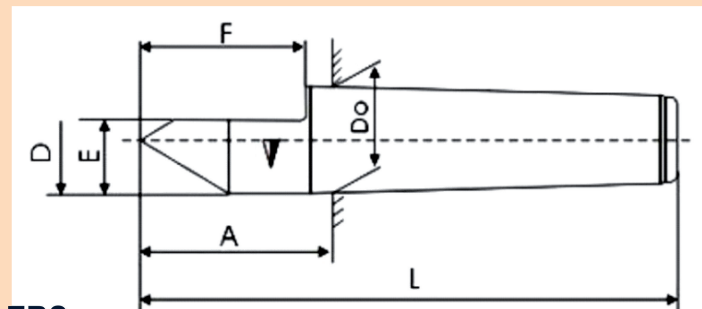
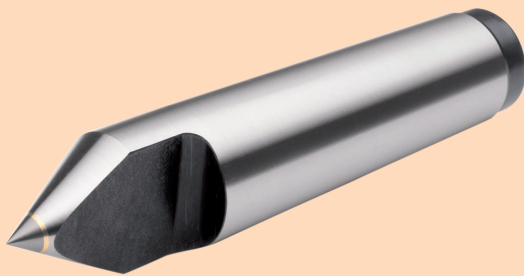
DEAD CENTERS



DIMENSIONS IN mm

DESIGNATION	L	A	D	D0	Accuracy (MM)
MT1	80	23	10.0	12.065	0.005
MT2	100	31	15.0	17.78	0.005
MT3	125	39	21.0	23.825	0.005
MT4	160	51	30.0	31.267	0.005
MT5	200	64	41.0	44.399	0.005

HALF DEAD CENTERS



DIMENSIONS IN mm

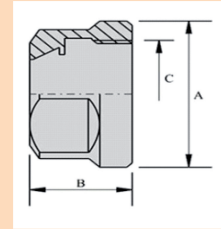
DESIGNATION	L	A	D	D0	E	F	Accuracy (MM)
MT2	125	31	15.0	17.78	11	30	0.005
MT3	160	39	21.0	23.825	15	38	0.005
MT4	200	51	30.0	31.267	21	50	0.005
MT5	200	64	41.0	44.399	29	63	0.005

Note: In this With Carbide tipped centers also available.





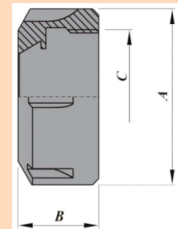
HEXAGONAL NUTS FOR ER COLLET CHUCKS (DIN 6499)



DIMENSIONS IN mm

DESIGNATION	A	B	C	SPANNER TO BE USED
UM/ER11	19.0	11.3	M14X0.75	GS 17
UM/ER16	28.0	17.5	M22X1.50	GS 25
UM/ER20	34.0	19.0	M25X1.50	GS 30

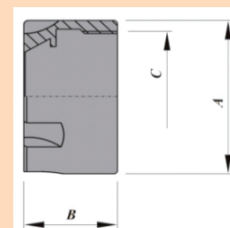
SLOTTED NUTS FOR ER COLLET CHUCKS (DIN 6499)



DIMENSIONS IN mm

DESIGNATION	A	B	C	SPANNER TO BE USED
UM/ER25	42.0	20.0	M32X1.5	E25
UM/ER32	50.0	22.5	M40X1.5	E32
UM/ER40	63.0	25.5	M50X1.5	E40
UM/ER50*	78.0	35.5	M64X2.0	E50

MINI NUTS FOR ER COLLET CHUCKS



DIMENSIONS IN mm

DESIGNATION	A	B	C	SPANNER TO BE USED
UM/ER 8M	12.0	12.0	M10X0.75	E-8M
UM/ER 11 M	16.0	12.0	M13X0.75	E-11M
UM/ER 16M	22.0	17.5	M19X1.00	E-16M
UM/ER 20 M	28.0	19.0	M24X1.00	E-20M
UM/ER 25M	35.0	20.0	M30X1.00	E-25M



BABY CHUCKS (METRIC SIZES)

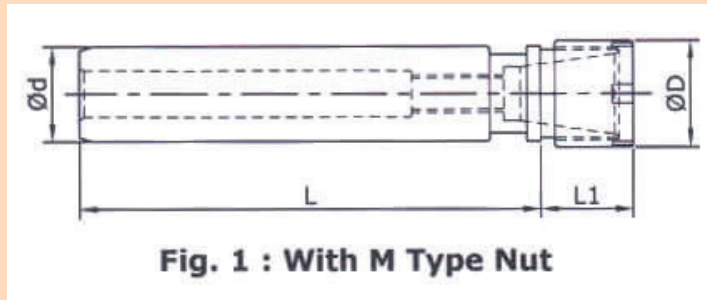
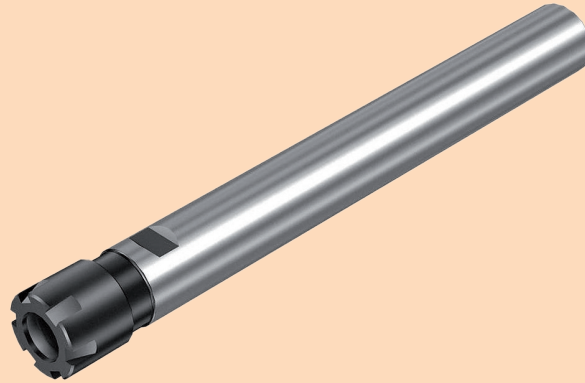


Fig. 1 : With M Type Nut

DESIGNATION	*SUITABLE FOR COLLET	COLLET CLAMPING CAPACITY (DIA)	$\varnothing D1$	NUT		D3	L1	L2	SPANNER
				$\varnothing D2$	DESIGNATION				
CYL8/RD8M/56	RD8	1-5	8	12	UM/RD8M		56	23	E-8M
CYL8/RD8M/80	RD8	1-5	8	12	UM/RD8M		80	23	E-8M
CYL8/RD11M/56	RD11	1-7	8	16	UM/RD11M		56	30	E-11M
CYL12/RD11M/100	RD11	1-7	12	16	UM/RD11M		100	30	E-11M
CYL12/RD16M/80	RD16	1-10	12	22	UM/RD16M		80	40	E-16M
CYL16/RD16/60	RD16	1-10	16	28	UM/RD16	M8X1	60	37	GS-25
CYL20/RD16/50	RD16	1-10	20	28	UM/RD16	M8X1	50	37	GS-25
CYL20/RD16/100	RD16	1-10	20	28	UM/RD16	M8X1	100	37	GS-25
CYL16/RD20M/100	RD20	2-13	16	28	UM/RD20M	M12X1	100	46	E-20M
CYL20/RD20/60	RD20	2-13	20	34	UM/RD20	M12X1	60	46	GS-30
CYL20/RD20/100	RD20	2-13	20	34	UM/RD20	M12X1	100	46	GS-30
CYL20/RD25/100	RD25	2-16	20	42	UM/RD25	M12X1	100	47	E-25
CYL25/RD25/50	RD25	2-16	25	42	UM/RD25	M18X1.5	50	47	E-25
CYL25/RD25/100	RD25	2-16	25	42	UM/RD25	M18X1.5	100	47	E-25
CYL20/RD32/50	RD32	3-20	20	50	UM/RD32	M12X1	50	58	E-32
CYL20/RD32/100	RD32	3-20	20	50	UM/RD32	M12X1	100	58	E-32
CYL25/RD32/50	RD32	3-20	25	50	UM/RD32	M18X1.5	50	58	E-32
CYL40/RD32/80	RD32	3-20	40	50	UM/RD32	M22X1.5	80	58	E-32
CYL25/RD40/50	RD40	4-26	25	63	UM/RD40	M18X1.5	50	60	E-40
CYL40/RD40/75	RD40	4-26	40	63	UM/RD40	M22X1.5	75	60	E-40

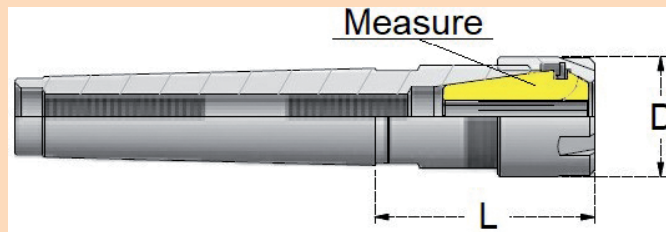
NOTE:

CYL. COLLECT CHUCKS ARE SUPPLIED WITH THE NUTS.
 CYL. COLLET CHUCKS OF OTHER SIZES AND WITH FLAT ON SHANK ARE AVAILABLE ON REQUEST.
 RD COLLETS ARE SAME AS ER COLLETS.
 PLACE SEPARATE ORDER FOR SPANNERS.





MORSE TAPER SHANK



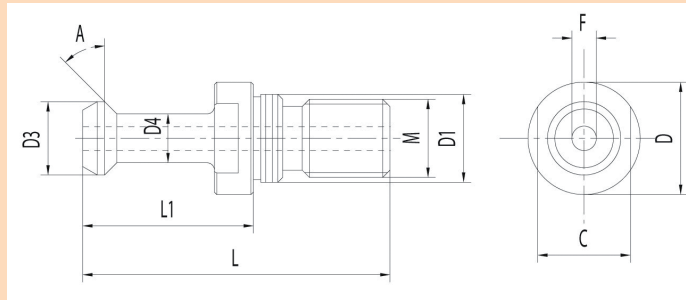
DESIGNATION	*SUITABLE FOR COLLET	COLLET CLAMPING CAPACITY (DIA)	DRAWBOLT ØD	STOPPER SCREW ØD1	L	NUT		SPANNER DESIGNATION
						ØD	DESIGNATION	
MTB1/RD11	RD11	1-7	M6	M6	25	19	UM/RD11	GS-17
MTB2/RD11M	RD11	1-7	M10	M6	25	16	UM/RD11M	E-11M
MTB1/RD16	RD16	1-10	M6	M6	45	28	UM/RD16	GS-25
MTB1/RD16M	RD16	1-10	M6	M6	45	22	UM/RD16M	E-16M
MTB2/RD16	RD16	1-10	M10	M8	42	28	UM/RD16	GS-25
MTB2/RD16M	RD16	1-10	M10	M8	42	22	UM/RD16M	E-16M
MTB2/RD20	RD20	2-13	M10	M10	50	34	UM/RD20	GS-30
MTB2/RD20M	RD20	2-13	M10	M10	50	28	UM/RD20M	E-20M
MTB2/RD25	RD25	2-16	M10	M12	55	42	UM/RD25	E-25
MTB2/RD25M	RD25	2-16	M10	M12	54	35	UM/RD25M	E-25M
MTB3/RD16M	RD16	1-10	M12	M8	45	22	UM/RD16	E-16M
MTB3/RD20M	RD20	2-13	M12	M10	50	28	UM/RD20M	E-20M
MTB3/RD25	RD25	2-16	M12	M12	55	42	UM/RD25	E-25
MTB3/RD25M	RD25	2-16	M12	M12	55	35	UM/RD25M	E-25M
MTB3/RD32	RD32	3-20	M12	M12	70	50	UM/RD32	E-32
MTB3/RD40	RD40	4-26	M12	M16	80	63	UM/RD40	E-40
MTB4/RD25	RD25	2-16	M16	M12	55	42	UM/RD25	E-25
MTB4/RD32	RD32	3-20	M16	M16	60	50	UM/RD32	E-32
MTB4/RD40	RD40	4-26	M16	M16	80	63	UM/RD40	E-40
MTB4/RD50	RD50	12-34	M16	M16	95	78	UM/RD50	E-50
MTB5/RD40	RD40	4-26	M20	M16	80	63	UM/RD40	E-40
MTB5/RD50	RD50	12-34	M20	M16	90	78	UM/RD50	E-50

NOTE:

- RD COLLETS ARE SAME AS ER COLLETS.
- COLLET CHUCK DESIGNATIONS GIVEN ARE FOR DRAW TYPE ONLY.
- FOR TANG TYPE, REFER ORDERING INSTRUCTION.
- COLLET CHUCKS ARE OFFERED WITH NUTS.
- PLACE SEPARATE ORDER FOR SPANNERS.



PULL STUDS FOR BT TAPER SHANK TOOLS



DESIGNATION	D1	D2	D3	D4	D5	L1	L2	L3	Ø	FIG
PS/SPT1/30/30/01	M12	12.5	16.5	7	11	43	23	18	30	1
PS/SPT1/30/45/02	M12	12.5	16.5	7	11	43	23	48	45	1
PS/SPT1/30/0/03	M12	12.5	16.5	7	11	43	23	48	0	1
PS/SPT1/40/30/06	M16	17	23	10	15	60	35	28	30	1
PS/SPT1/40/30/06/C	M16	17	23	10	15	60	35	28	30	2
PS/SPT1/40/45/07	M16	17	23	10	15	60	35	28	45	1
PS/SPT1/40/45/07/C	M16	17	23	10	15	60	35	28	45	2
PS/SPT1/40/45/08	M16	17	23	11.3	15.5	57	35	26	45	1
PS/SPT1/40/0/09	M16	17	23	10	15	60	35	28	0	1
PS/SPT1/40/0/10	M16	17	23	10	15	50	29	18	0	1
PS/SPT1/40/15/11	M16	17	23	14	19	54	29	23	15	1
PS/SPT1/40/15/11/C	M16	17	23	14	19	54	29	23	15	2
PS/SPT1/40/15/11/C0	M16	17	23	14	19	54	29	23	15	3
PS/SPT1/45/30/12	M20	21	31	14	19	70	40	31	30	1
PS/SPT1/45/45/13	M20	21	31	14	19	70	40	31	45	1
PS/SPT1/50/30/14	M24	25	38	17	23	85	45	35	30	1
PS/SPT1/50/30/14/C	M24	25	38	17	23	85	45	35	30	2
PS/SPT1/45/0/15	M20	21	31	14	19	70	40	31	0	1
PS/SPT1/50/45/16	M24	25	38	17	23	85	45	35	45	1
PS/SPT1/50/45/16/C	M24	25	38	17	23	85	45	35	45	2
PS/SPT1/50/0/17	M24	25	38	17	23	85	45	35	0	1





PULLSTUDS-DIN69872

DESIGNATION	D1	D2	D3	D4	D5	L1	L2	L3	Ø	FIG
PS/SPT2/40/15/01	M16	17	23	14	19	54	26	20	15	5
PS/SPT2/40/15/01/C	M16	17	23	14	19	54	26	20	15	4
PS/SPT2/30/15/02	M12	13	17	9	13	44	24	19	15	5
PS/SPT2/45/15/04/C	M20	21	30	17	23	65	30	23	15	4
PS/SPT2/50/15/05	M24	25	36	21	28	74	34	25	15	5
PS/SPT2/50/15/05/C	M24	25	36	21	28	74	34	25	15	4

PULLSTUDS-IS11173 TYPE 2 & ISO 7388

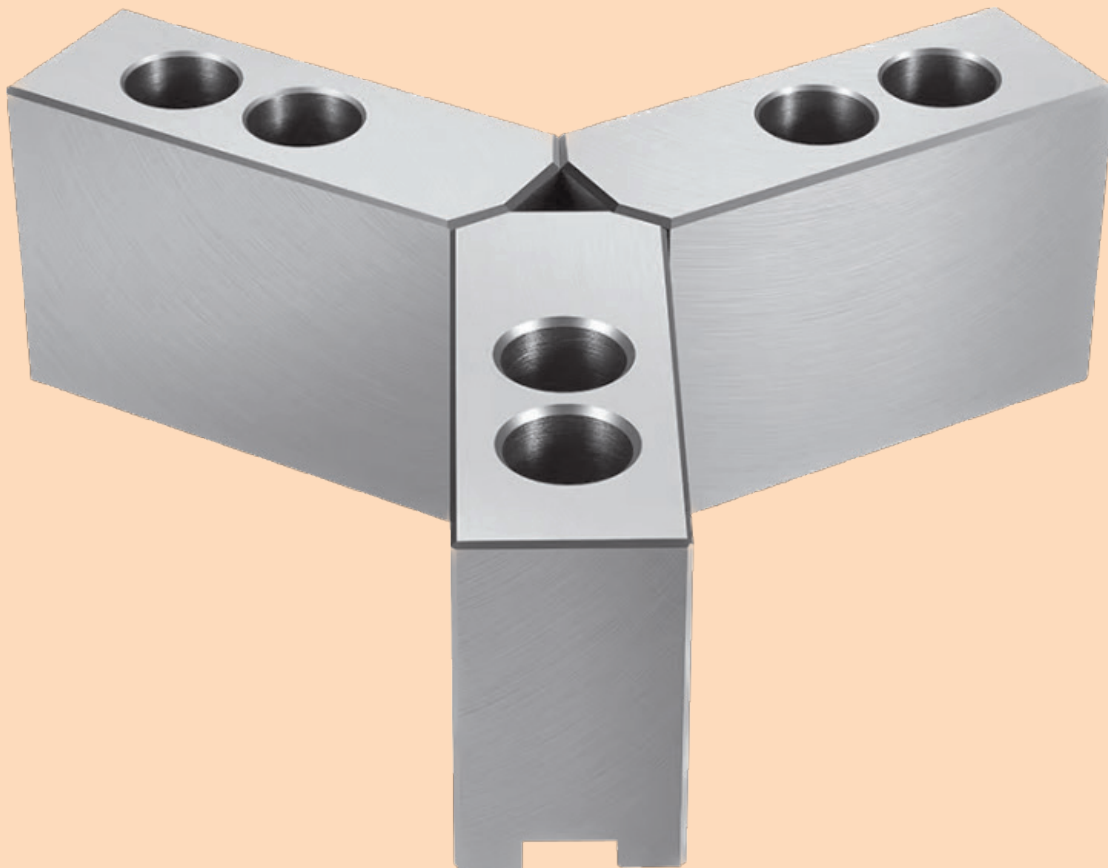
DESIGNATION	D1	D2	D3	D4	D5	L1	L2	L3	Ø	FIG
PS/SPT3/40/45/01	M16	17	22.5	12.95	18.95	44.5	16.4	11.15	45	7
PS/SPT3/40/45/01/C	M16	17	22.5	12.95	18.95	44.5	16.4	11.15	45	6
PS/SPT3/45/45/02/C	M20	21	30	16.3	24.05	56	20.95	14.85	45	6
PS/SPT3/50/45/03	M24	25	37	19.6	29.1	60.5	25.55	17.95	45	7
PS/SPT3/50/45/03/C	M24	25	37	19.6	29.1	60.5	25.55	17.95	45	6

PULLSTUDS FOR CT TAPER SHANK TOOLS

TAPER	G		ØD	ØD1	L	L1	L2	L3	ØD1	ØD2	S	FIG
	METRIC	INCH UNC-2A										
30	M12	1/2"x13"	0.52	0.38	1.1	0.46	0.32	0.04		0.64	0.53	2
40	M16	5/8"x11"	0.74	0.49	1.5	0.64	0.44	0.06	0.28	0.92	0.75	1
40	M16	5/8"x11"	0.74	0.49	1.5	0.64	0.44	0.06		0.92	0.75	2
45	M20	3/4"x10"	0.94	0.61	1.8	0.82	0.58	0.08	0.37	1.18	1.00	1
45	M20	3/4"x10"	0.94	0.61	1.8	0.82	0.58	0.08		1.18	1.00	2
50	M24	1"x8"	1.14	0.82	2.3	1.00	0.70	0.10	0.47	1.42	1.25	1
50	M24	1"x8"	1.14	0.82	2.3	1.00	0.70	0.10		1.42	1.25	2



JAWS

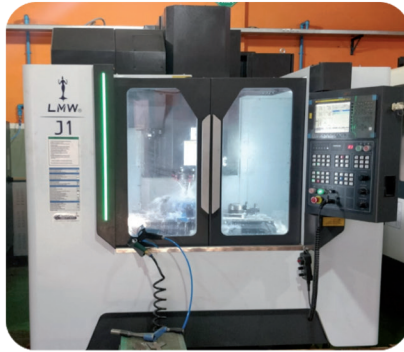


*** Customized JAWS will supply on request**

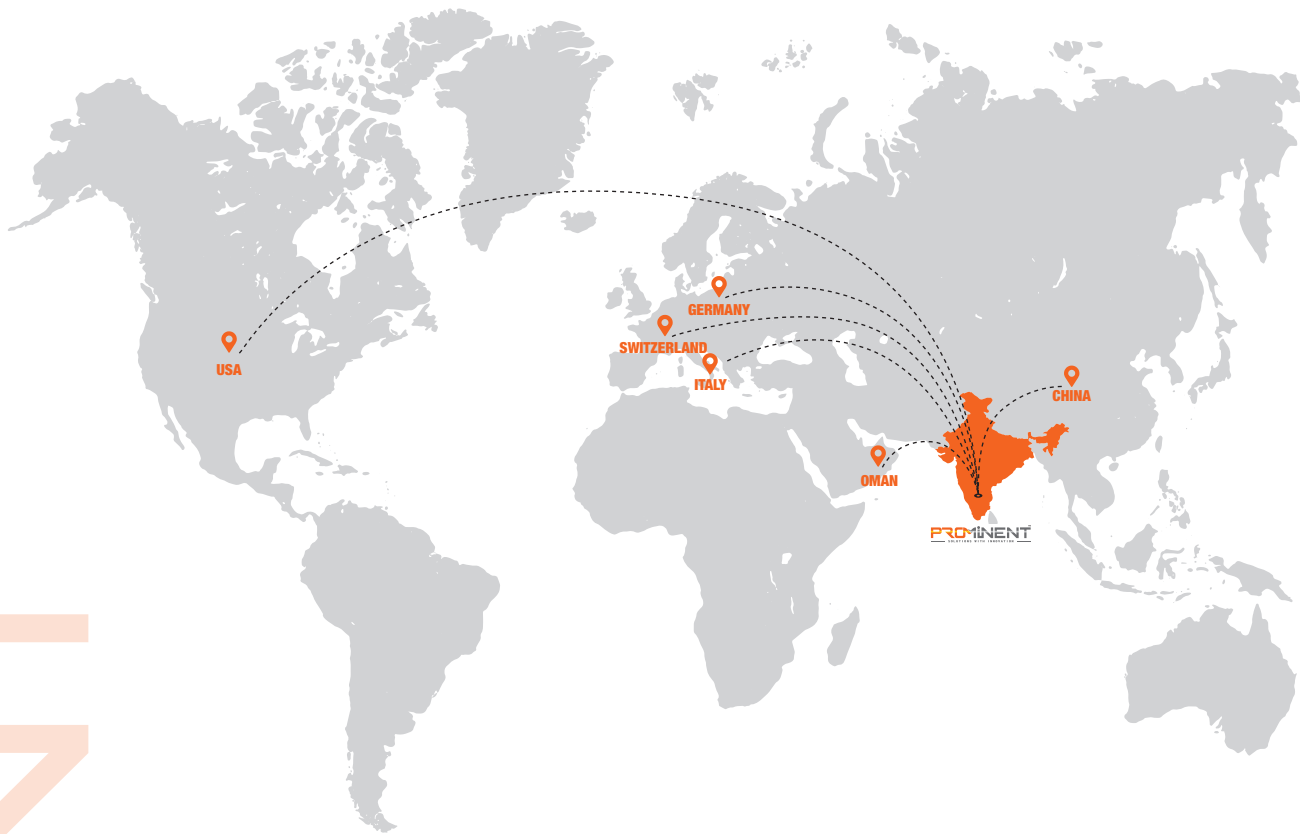




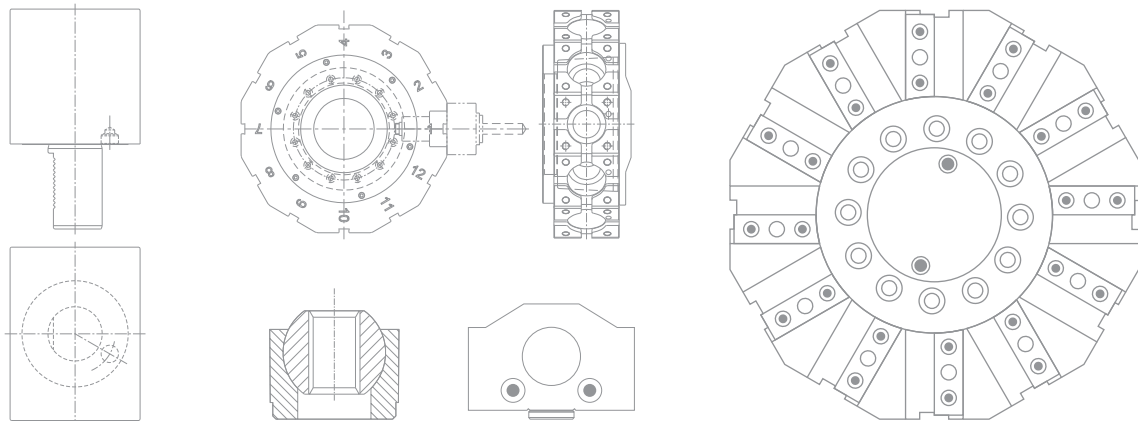
INFRASTRUCTURE



Our Global Presence



PROMINENT



PROMINENTTM
SOLUTIONS WITH INNOVATION

Head Office / Manufacturing Facility

Prominent Autotech

310×311/4, 8th Cross 4th Phase Peenya Industrial Area Near NTTF, Bengaluru - 560 058.

✉ info@prominentautotech.com,
guna@prominentautotech.com

☎ 080 2658 1755 ☎ +91 99167 01312

www.prominenttools.com

Manufacturing Extension Unit

Prominent Machine Tools

60/61, 10th Cross, Balaji Nagar Peenya Industrial Area Thigalarapalya, Bengaluru - 560 058.

✉ prominentmachinetools@gmail.com

☎ +91 99167 01312



QR Code For
GPS Location



QR Code For
GPS Location